

注：本公司提供印刷有资质特种结构房屋工程建筑科技有限公司
 Xiamen KNBO House Co., Ltd. reserves the right to change
 performance and specification according to the structure
 from time to time.



厦门晋博建筑科技有限公司
 XIAMEN KNBO HOUSE CO., LTD



厦门晋博建筑科技有限公司
 XIAMEN KNBO HOUSE CO., LTD

工厂地址：厦门软件园三期洪塘社区洪塘工业区
 办公地址：厦门软件园三期技术（孵化）产业基地金辉508室
 电话：+86 592 7622188 / 7622189
 传真：+86 592 7622181
 网址：www.knbo.cn www.knbohouse.com
 邮箱：sales@knbo.cn info@knbo.cn

Factory address : Xiangyuan Pu Industry Garden, Xilian Road, Kang'an District, Xiamen, China
 Office address : Room 508, Qiangye Building, South High Tech Park, Xiang'an, Xiamen, China
 Tel : +86 592 7622188 / 7622189
 Fax : +86 592 7622181
 Web : www.knbo.cn www.knbohouse.com
 E-mail : sales@knbo.cn info@knbo.cn

【绿色、抗震、快速、持续】

超轻钢预制房屋解决方案供应商
 LIGHT STEEL PREFAB HOUSE SOLUTION PROVIDER



Contents 目录

公司简介 Company Profile	-----	Page01/02
产品介绍 Product Introduction	-----	Page03/09
施工流程 Process Flow	-----	Page10/10
经典项目 Classic Projects	-----	Page11/30
常见问题 Frequent Asked Questions	-----	Page31/32



Excellent Brand Presenting Enterprise of Int'l Prefab Building Industry 2013
 China Integrated Building Committee of CCPI Member
 2013年度国际预制建筑行业优秀品牌展示企业
 中国国际预制建筑行业联盟执行委员会集成建筑联盟会员单位

公司简介 About COMPANY PROFILE

厦门晋博建筑科技有限公司自2005年起一直致力于冷弯薄壁型钢结构体系的研发，公司引进国际先进的智能化全自动冷弯薄壁型钢、钢板成型、内埋合模等生产以及完善的后处理涂装等设计软件，遵循《中国低层冷弯薄壁型钢结构建筑技术规程》(JGJ227-2011)以及《薄壁型冷弯设计规程》(AS/NZS 4680:2005)，结合具有多年实践经验的设计、制作、施工团队，形成了集设计、生产、安装、售后于一体的独特的小BO超轻钢结构房屋体系。

厦门晋博建筑科技有限公司作为创新型企业的代表，除了为客户提供量身定制化的服务以外，还针对国内市场需求，结合KNBO超轻钢结构房屋体系自主研发超轻钢结构房屋系列，目前已经顺利推出实用型、紧凑型、时尚型、典雅型、经济型、经典型系列超轻钢结构房屋产品。晋博产品集绿色、抗震、快捷、持续等优势为一体，产品广泛应用于别墅住宅、度假别墅、星级酒店、斜坡房屋、建筑小品等建设。

Xiamen KNBO House Co.,Ltd has been focusing on the design of light gauge steel frame building system since 2005. It has cultivated a group of high quality professional team, from experienced design and consultant service, manufacture and shipping, installation manual and on site supervise, to after-service technical consultant, KNBO steel housing solution centering on catering customers' unique need with pragmatic attitude in creativity.

KNBO integrates the most advanced automatic production lines from New Zealand to ensure the production capacity of steel frame. KNBO merges energy saving mission to its products and the products are in compliance with (AS/NZS 4680:2005) and Specification for Low-Rise Cold-formed Thin-Wall Steel Buildings JGJ227-2011. KNBO building products can be widely applied for residential house, resort villa, commercial house, sentry box and etc. We offer a range of 1-5 bedroom resort villa with style, elegance and quality.



KNBO 超轻钢结构房屋体系性能

KNBO Light Steel Frame System Performance



抗震性: 抗震性能满足9度设防要求
抗风性: 可抵抗70m/s的飓风, 抗风等级为15级台风
耐久性: 超轻钢主体结构使用寿命达50年以上
防火: 达到国家四级防火等级
隔音性: 隔音效果可高达50分贝以上
环保性: 钢结构部分可100%回收, 其他材料大部分可回收

Earthquake Resistance: Seismic performance meet the requirement of 9°
Wind Resistance: Could resist 70m/s hurricane, typhoon resistant class is 15
Durability: The lifetime of light steel frame could reach over 50 years
Fireproof: Reach national class 4 fireproof class
Sound Insulation: Above 60 decibel
Environment Protection: Steel structure material maybe recycled 100%, most of other supporting material may also recycled



超轻钢结构系统

Light Steel Frame System

基本元件
Basic Component



- 穿墙孔 Service hole
- 定位孔 Web-hole searched for stud + brace
- 组对孔 Assembly hole
- 成型槽口 Profile formwork (Roll-forming)
- 冲孔定位孔 Drilling & fastening hole punched
- 编程器 (ID) Image generator identifier (EXT WALL, 01, 13TH COMPONENT)
- 13D 滚切 for stud & brace clearance
- 预埋件 (预埋) To fit made mating piece

说明:
 ● 高中基本元件规格为C90×41和C140×41
 ● 元件冲装穿孔、冲穿钱穿孔、切边、成型、定长切断、烙印编码等一系列工序均由计算机智能化软件控制完成
 ● 各元件都有独立的编号, 依据编号参照装配图拼装, 在预先冲好预配孔中嵌上预埋件即可
 ● 智能化快捷装配, 零误差的精准精度

Description:
 ● The specifications of basic component are C90×41 and C140×41
 ● Series of assembly hole and service hole cutting, web punching, roll forming in shape, size making, jet printing coding was controlled by laptop computer generate fm design software
 ● Each component being assembly by self-screw with independent code according to assembly drawing
 ● Fast assembly of DIY intelligence, zero error decoration and inlaying



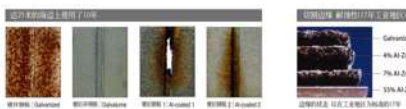
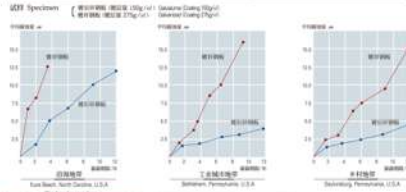
结构材料 Structural Material

晋博超轻钢结构采用高强度G550MPa, AZ150的氟铝化铝锌钢作为结构主材。镀锌铝锌板是铝锌合金合理配比的产物, 由铝(重量比为55%, 表面体积比为80%)、锌(重量比为43.3%)以及铁(重量比为1.6%)组成。结合了铝的耐腐蚀性和耐锈性, 以及铁的“牺牲阳极”, 杜绝了结构腐蚀和后期虫害情况, 大大提高了抵抗火灾、飓风、地震和其他自然灾害的能力。

KNBO light steel structure mainly adopts high tensile G550MPa, hot dip aluminum and zinc 150g/m² corrosion-resistant galvalume steel. Galvalume steel is the result of an ideal alloy of aluminum and zinc. It consists of aluminum(55% in weight ratio but 80% in surface volume ratio), zinc(43.4% in weight ratio) so it has both aluminum - unique corrosion - resistance and heat resistance and zinc-unique galvanic behavior.

镀锌铝锌板的特性 Galvalume Characteristics

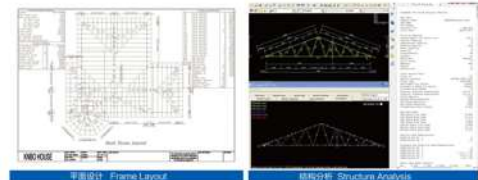
室外暴露试验(13年) Outdoors Exposure Test (for 13 Years)



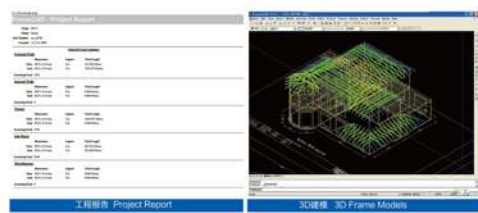
结构设计软件 Frame Design Software

晋博会自动编程设计生产系统将设计生产一体化, 提高了工作效率, 减少了工程误差。通过软件, 根据要求(风速、荷载、抗震等)设计规范进行定量的结构设计, 结构直观的3D模型进行结构校核, 确保每个部件精确无误。

KNBO all-in-one solution integrates all progress involved in designing and building, improving project efficiency and minimizing delay. Based on the design code and requirement (wind speed, load, seismic grade etc) to design in the software, A3D Frame modeling is further performed to check for structural integrity and to ensure the accuracy of each component.



智能的计算机三维互动设计系统 Intelligence computer 3D interaction design system
智能的计算机辅助生产加工系统 Intelligence computer aided production processing system

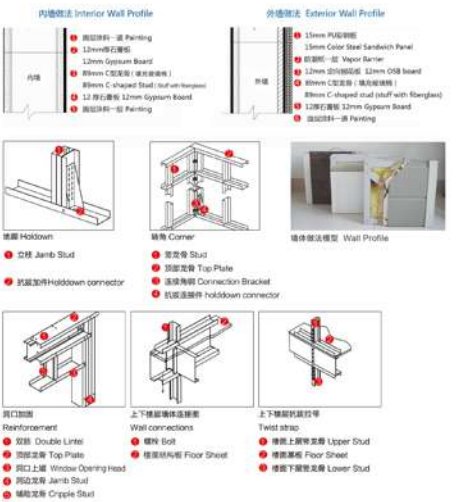


工程报告 Project Report 3D建模 3D Frame Models

墙面系统 Wall System

墙体采用采用C30×41型钢, G550MPa高强度氟铝化铝锌板作为墙体龙骨框架, 墙体通过螺钉或者螺栓与墙、地面连接, 墙与墙之间通过自攻螺钉连接成整体形成系统。

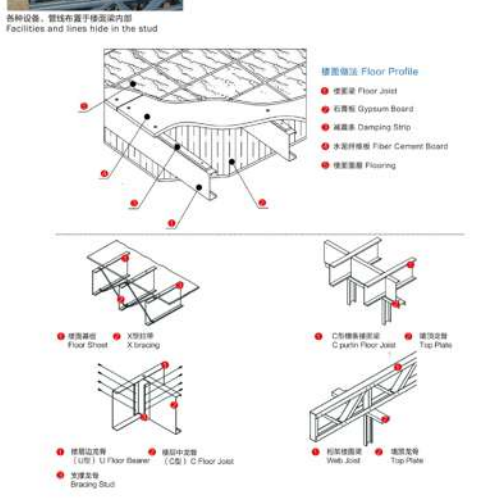
Use C30×41, G550MPa strength web plate stiffening C shaped light steel as wall frame. Wall is connected to floor and ground through screw or bolts. Wall is connected to wall through self-tapping screws together, so building system forms.



楼面系统 Floor System

楼面系统由C140×41型钢龙骨组成, 最大跨度为6000mm, 楼面龙骨的厚度比传统结构的厚度可减少1/2-1/3。

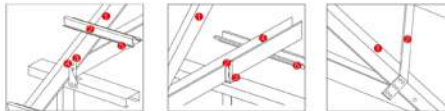
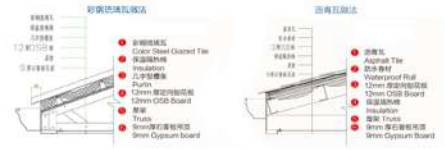
Floor structure could use C140×41 to make floor joist. Its largest span could reach 6000mm. The thickness of floor joists reduce 1/2 to 1/3 compared with traditional structure.



屋面系统

Roof System

屋面采用独特创新的工艺科学建造出更复杂的屋面, 且更灵活。
Roof system: Having the roof truss facilitates the construction of more complex modeling roof which making the layout flexible.



屋面次龙骨可以用原有屋架间的檩条替代, 也可用于铺设上层屋面材料。
Roof batten strengthens horizontal between trusses, and can be used to laying the roof cladding.

使用吊顶龙骨可以更方便地铺设石膏板等。
Easy to fix plasterboard to use ceiling batten.

屋面X拉撑能有效稳定的屋架结构。
X bracing guarantee more stable structure.

- 屋架上弦 Top Chord
- 檩条 Purlin
- 自攻钉 Self-Drilling Screw
- 三角角钢 Triple Grip
- 屋架下弦 Bottom Chord
- 屋架上弦 Top Chord
- 屋架斜撑 Truss Bracket
- 自攻钉 Self-Drilling Screw
- 屋架下弦 Bottom Chord
- 檩条 Purlin
- 屋架上弦 Top Chord
- 斜拉索 Strap Bracing

施工流程

Process Flow



经典项目

Classic Projects





厦门红钢别墅 Villa of Hongsteel



厦门海悦学校别墅 Xiamen Huayue Villa



福州五华集团五华·侯选展示馆 SOHO House of Wufua Group



厦门晋博样品房 KNBO Sample House





厦门东坪山庄 Xiamen Dongping Villa



厦门用经典模型度假休闲屋 Classic Resort Villa in Xiamen



新西兰奥克兰展示屋 Show House in Auckland



北京润丰集团厦门香山度假屋 Fashion Resort Villa



时尚型度假屋精品屋 Fashion Resort Villa





阿安金光湖度假屋 Tong'an Jinguanghu Resort Villa



东南亚风格样板房 Sample House of Southeast Asia Style



厦门鼓浪屿万寿山度假别墅 Holiday Villa of Longevity Hill



漳州长泰天柱山旅游度假区项目 Resort Villa Project in Changtai



邵武市桂林乡水上乐园 Water Park Project in Shaowu



厦门市东坪山温室大棚 Greenhouse Project

福建省莆田市绿世界温室项目 Greenhouse Project



漳州市南靖县人民法院安检大厅 Security Hall of Nanjing Court



厦门市国家电网城北供电所岗亭 Guard House of STATE GRID



厦门国家安全局顶层加层 Additional Layer for Xiamen National Security Bureau



龙岩私宅顶层加层 Additional Layer for Longyan Residential



厦门海沧顶层加层 Haicang Additional Layer



厦门翔安顶层加层 Project of Xiamen Xiang'an



厦门翔安山庄别墅金属屋面 Steel Roof Systems of Yirou Villa



厦门集美集志农庄 Jishi Farm House

泉州清濠开发区保安亭 Guard House in Quanzhou

